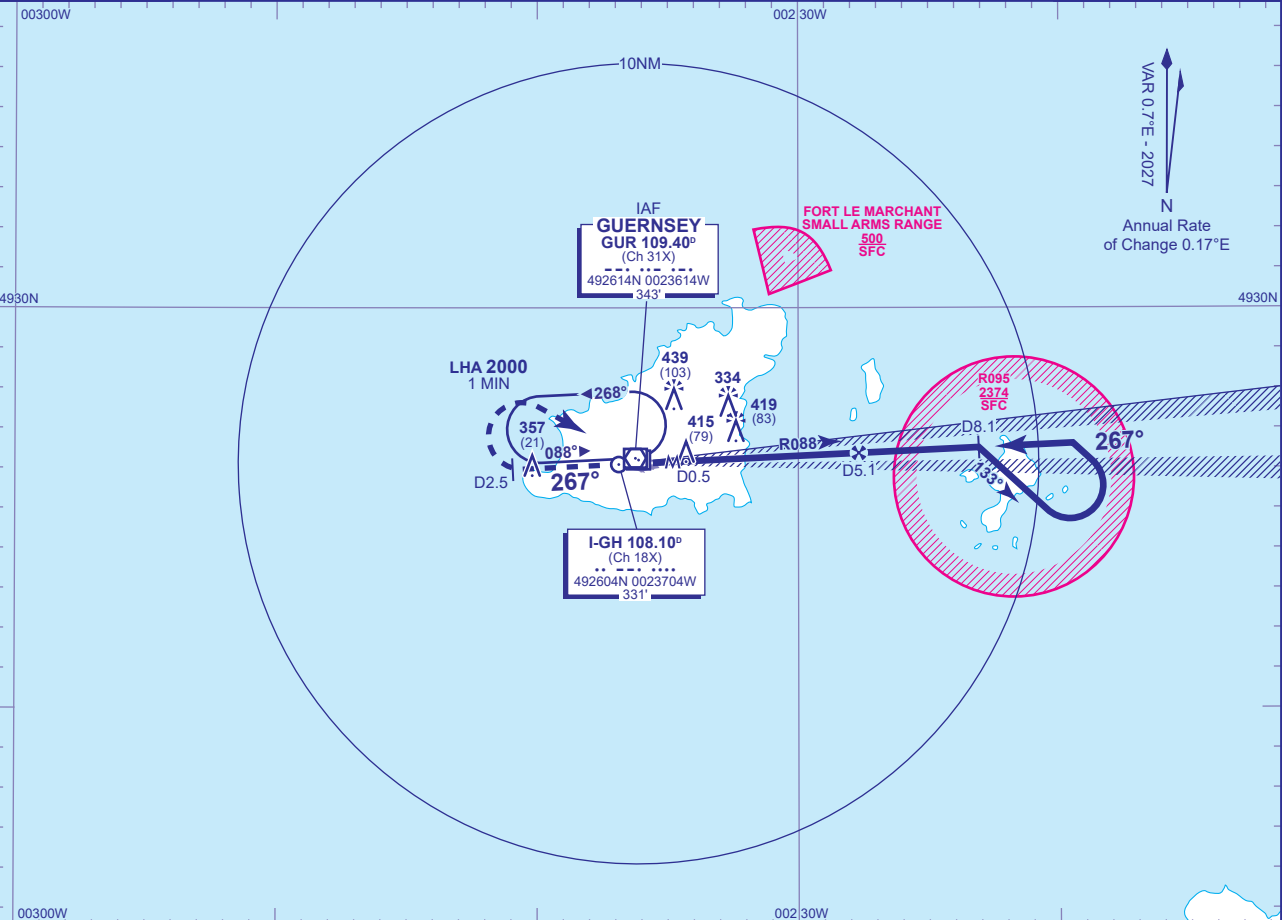


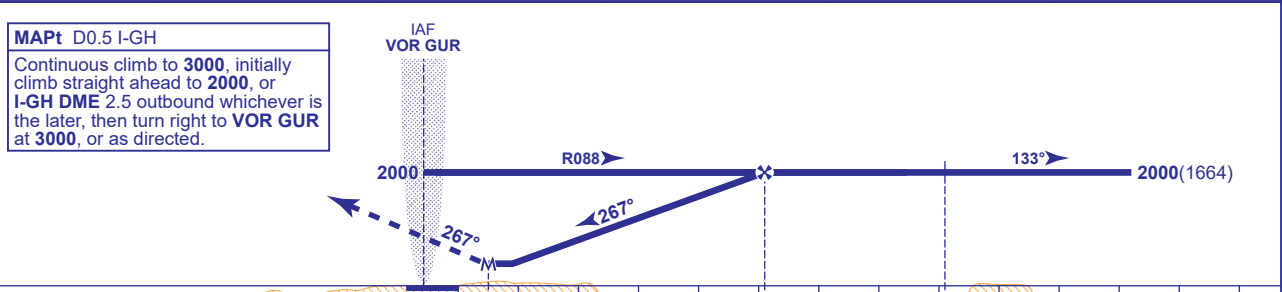
INSTRUMENT APPROACH CHART - ICAO

GUERNSEY
LOC/DME/VOR
RWY 27
(ACFT CAT A,B,C,D)

<div>MSA 25NM VOR GUR</div>	APP	128.655	GUERNSEY APPROACH	AD ELEVATION	336	LOC/DME/VOR RWY 27 (ACFT CAT A,B,C,D)
	TWR	119.955	GUERNSEY TOWER	THR ELEVATION	336	
	GMC	121.805	GUERNSEY GROUND	OBSTACLE ELEVATION	439 AMSL (103) (ABOVE THR)	
	RAD	124.505	GUERNSEY RADAR			
	ATIS	109.400	GUERNSEY INFORMATION	BEARINGS ARE MAGNETIC		
				TRANSITION ALTITUDE		5000



RECOMMENDED PROFILE Gradient 5.24%, 320FT/NM					
DME I-GH	5	4	3	2	1
ALT(HGT)	1980(1644)	1660(1324)	1340(1004)	1020(684)	700(364)



DME I-GH zero ranged to THR RWY 27						0 D0.5	D5.1	D8.1				
Aircraft Category		A	B	C	D	Rate of descent	G/S KT	160	140	120	100	80
OCA (OCH)	Procedure	670(334)	670(334)	670(334)	670(334)		FT/MIN	850	740	640	530	420
VM(C)OCA (OCH AAL)		Total Area	830(494)	830(494)	930(594)	1030(694)						

NOTE 1 Authority to penetrate restricted area R095 will be granted by Guernsey ATC prior to start of this procedure.
2 Aircraft will normally be required to hold not lower than 3000.

CHANGE (2/26): MAG INFO REVISED. MAG HEADINGS.